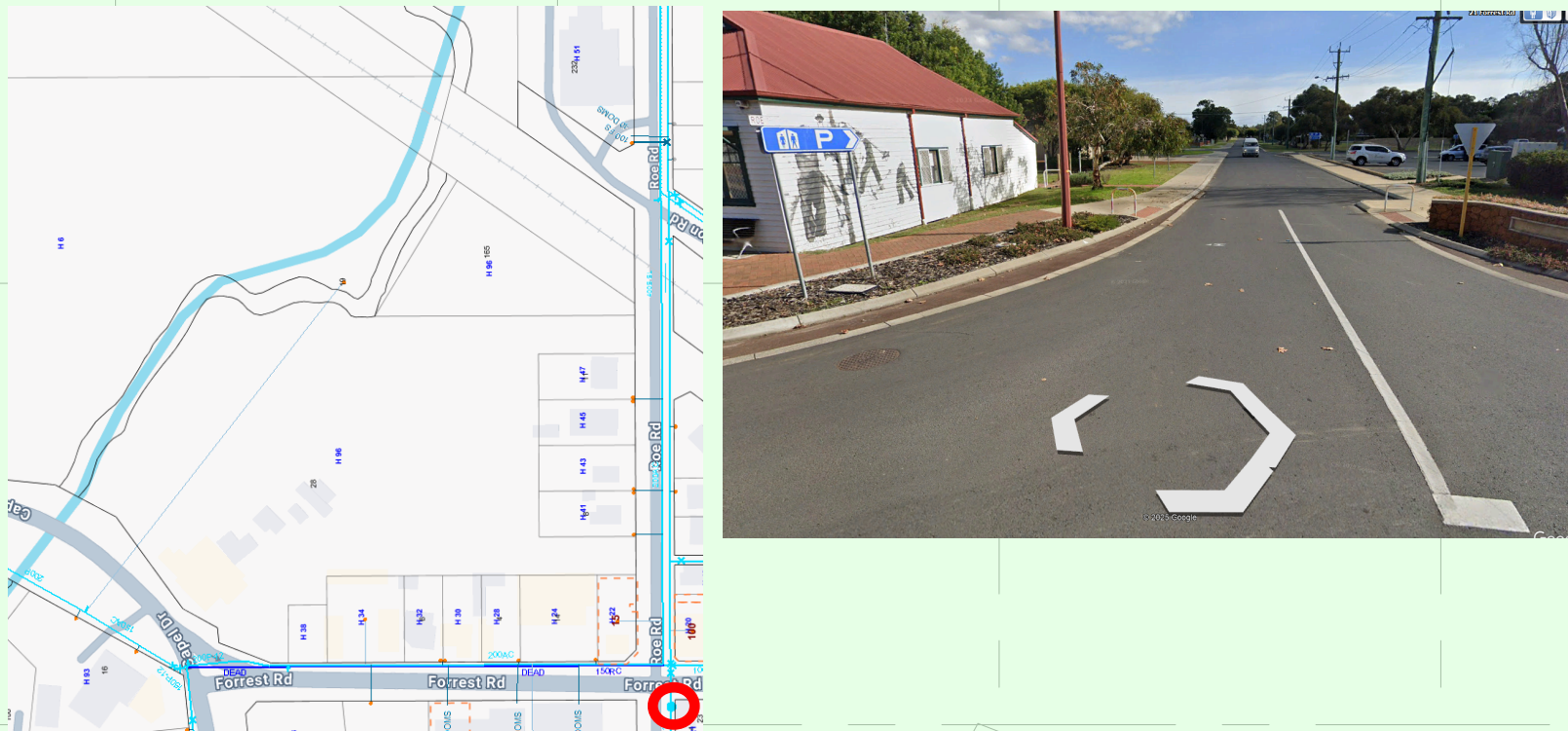


ESINET ASSET PLAN SHOWING LOCATIONS OF STREET HYDRANTS TO FOREST ROAD



SYMBOLS

- FIRE HYDRANT COVERAGE
- EXISTING MAIN
- FIRE HYDRANT 60METERS HOSE COVERAGE PLUS 10 METERS WATER SPRAY
- CONTROLLED ACCESS GATE

- NOTE:
- EXTERNAL FIRE HYDRANTS COVERAGE. AS 2419.1 - 2021
  - EXTERNAL FIRE HYDRANTS SHALL BE PROVIDED TO PROTECT THE WHOLE BUILDING OR THOSE PARTS OF THE BUILDING
  - EXTERNAL FIRE HYDRANT LOCATION REQUIREMENTS: 10M AWAY FROM THE BUILDING FACADE.
  - ALL POINTS ON A FLOOR SHALL BE WITHIN REACH OF A 10 M HOSE STREAM ISSUING FROM A NOZZLE AT THE END OF HOSE LAID ON FLOOR CONNECTED TO THE FIRE HYDRANT OUTLET.
  - THE HOSE SHALL EXTEND A MINIMUM LENGTH OF 1 M INTO THE AREA TO WHICH THE FIRE HYDRANT IS PROVIDING COVERAGE.
  - HARDSTANDING REQUIRED FOR ASSISTED HYDRANT BOOST FROM DFES PUMPER MINIMUM SIZE OF 15M x 6M IN ACCORDANCE WITH AS2419.1 SECTION 3.3 AND DFES BUILT ENVIRONMENT BRANCH GUIDELINE GL - 11.
  - FLOW AND PRESSURE TEST TO BE CONFIRMED.

- FIRE TENDER HARDSTAND SHALL BE 10 METERS AWAY FROM NON SPRINKLER PROTECTED BUILDING AND WITHIN 20 METERS OF EXTERNAL FIRE HYDRANT.
- PROPOSED BOOSTER CABINET DIMENSION: 2000MM(L) x 800MM(D) x 1600mm(H)
- DUAL TWIN HEAD HYDRANT
  - DUAL TWIN HEAD HYDRANT BOOSTER
  - DUAL ATTACK HYDRANT
- LOCATION REQUIREMENTS
- 10 M AWAY FROM HIGH VOLTAGE ELECTRICAL DISTRIBUTION EQUIPMENT
  - 10 M AWAY FROM ANY ELECTRIC VEHICLE CHARGING STATION
  - 3 M AWAY FROM GAS METER

- PROPOSED BOOSTER CABINET DIMENSION: 2000MM(L) x 800MM(D) x 1600mm(H)
- DUAL TWIN HEAD HYDRANT
  - DUAL TWIN HEAD HYDRANT BOOSTER
  - DUAL ATTACK HYDRANT
- LOCATION REQUIREMENTS
- 10 M AWAY FROM HIGH VOLTAGE ELECTRICAL DISTRIBUTION EQUIPMENT
  - 10 M AWAY FROM ANY ELECTRIC VEHICLE CHARGING STATION
  - 3 M AWAY FROM GAS METER

C	04.11.25	PRELIMINARY ISSUE	SV	SJ
B	24.10.25	PRELIMINARY ISSUE	SV	SJ
A	01.09.25	PRELIMINARY ISSUE	SV	SJ
REV	DATE	REVISION DESCRIPTION	DRN	CKD
PROJECT: MIXED USED DEVELOPMENT - CAPEL LOT 12, 28 & 165 CAPEL DRIVE, FORREST & ROE ROAD				
ARCHITECT: <b>DOEPEL MARSH</b> 61 Forrest St, Subiaco Western Australia 6008 PO Box 308 Subiaco WA 6904 T +61 8 9388 3281 F +61 8 9388 3162 License No. 2038 ABN 13 083 655 197 E admin@doepelmarch.com.au W www.doepelmarch.com.au				
CONSULTANT: <b>Decobu</b> Level 28, 140 St Georges Terrace, Perth, WA 6000 T: 1300 083 238 ABN: 43 608 399 971 www.decobu.com.au				
PRELIMINARY ISSUE				
DRAWING TITLE: FIRE PROTECTION SPATIAL PROPOSED MASTER PLAN				
SHT. SIZE:	SCALE:	DATE:	DRAWN:	CHECKED:
A1	1:500	Oct 2025	SV	SJ
DRAWING NO: W26-012-FS-SK-DWG-100				REV: B