



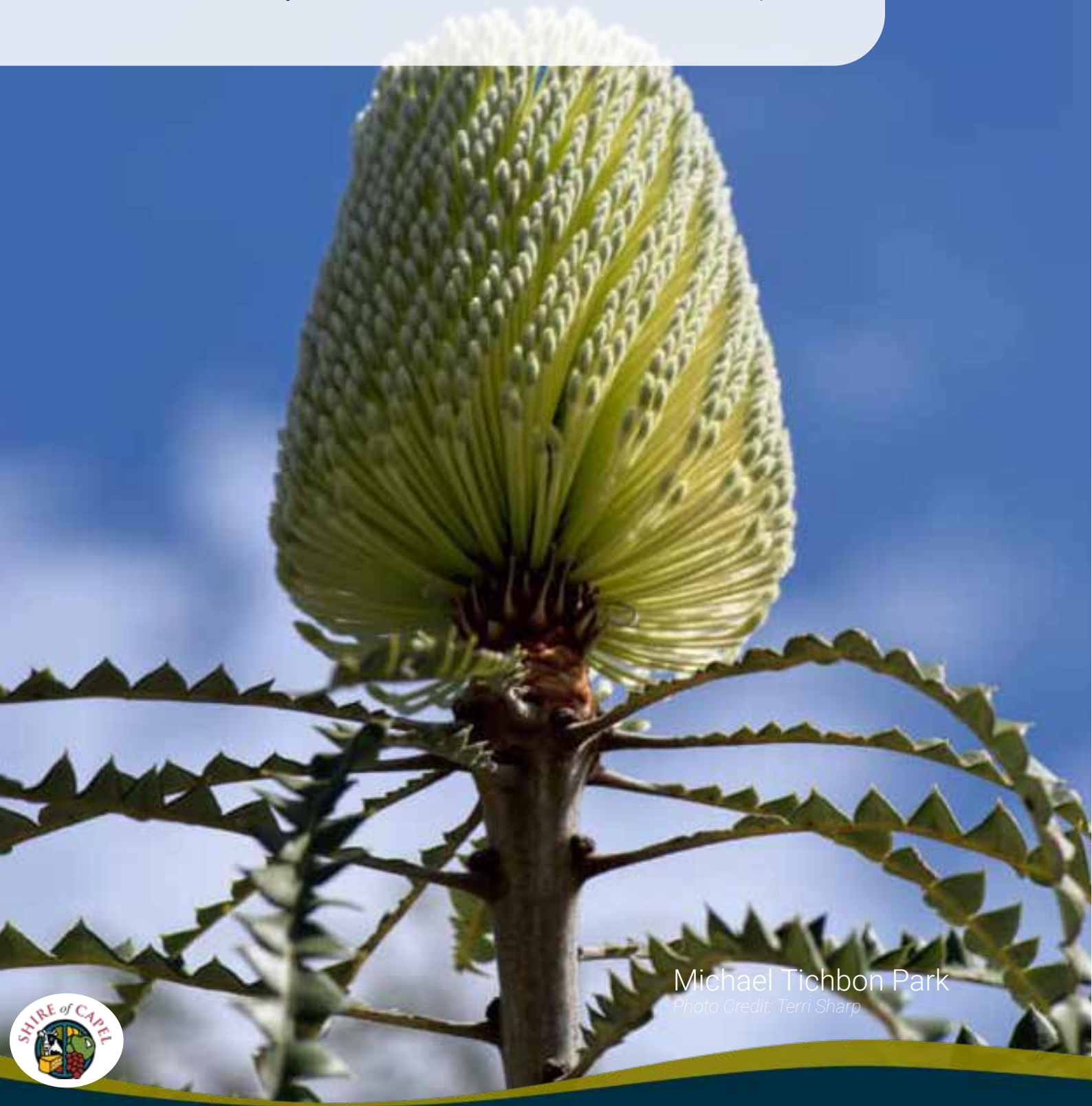
# Sustainability Framework 2023 - 2027



## Acknowledgment to Country

We wish to acknowledge the traditional custodians of the land the Wadandi people. We wish to acknowledge and respect their continuing connection to the land, waters and community.

We pay our respects to all members of the Aboriginal communities and their culture; and to Elders past and present, their descendants who are with us today, and those who will follow in their footsteps.



Michael Tichbon Park

*Photo Credit: Terri Sharp*





# Contents

Acknowledgement of Country	2
Executive Summary	4
Introduction	5
Background	6
Climate Change Context	7
Community Perceptions Survey	8
Summary of Sustainable Objectives	9
Framework Action Areas to Achieve Aims and Targets	12
Council's Key Priorities and Targets	13
Framework Action Plans	14
Sustainability	14
Energy	15
Transport	16
Water	17
Waste	19
Carbon	20
Current Funding Opportunities	21



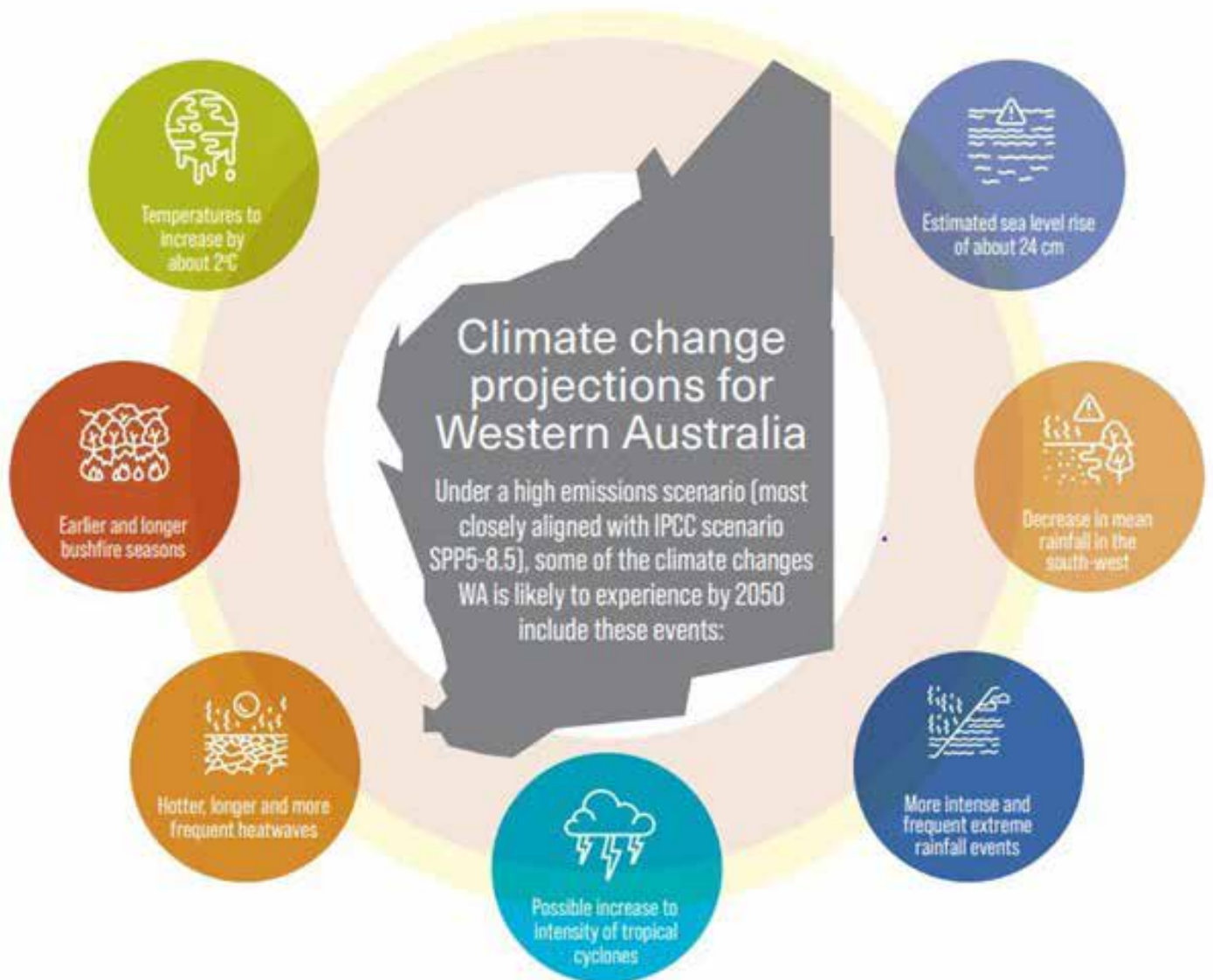
## Executive Summary

Australia's greenhouse gas emissions are among the highest in the world on a per capita basis and the country trails behind similar developed countries in pledging to reduce emissions.

The Shire of Capel acknowledges the urgency of acting in the face of a changing climate and is committed to operating responsibly and taking action to reduce emissions, manage the impacts of climate change across our district within our role and lead the advocacy within our local community regarding sustainability.

Environmental sustainability is a key strategic value and direction for the Shire and considered a key principle of responsible decision making at all levels.

This Sustainability Framework clearly defines the Shire's commitments on sustainability and embeds them in a broader reporting framework and action plan.





## Introduction

---

This Framework outlines the Shire of Capel’s sustainability approach over the next four years: 2023 to 2027 and focuses on reducing environmental impacts in the areas of energy, transport, water, waste and carbon, while outlining key action areas that Council intends to take to adapt to a changing climate and reduce carbon emissions.

The Framework is guided by the Council’s vision “a future focused and resilient community that benefits from good governance, responsive services and appropriate facilities to deliver positive social, environmental and economic outcomes for everyone.”

The *Shire of Capel’s Strategic Community Plan 2021 – 2031* details the following key priority areas focused on sustainability, that provide the road map to achieving the above vision:

- 2.2 Increased community capacity in supporting positive environmental management.
- 2.3 A Shire committed to sustainable practices.
- 2.6 Increased opportunities for better waste management and reduction.
- 2.7 Urban planning that supports sustainable development.





## Background

---

The Shire of Capel is situated about 212km south of Perth in the Southwest region, midway between Bunbury and Busselton. It covers an area of 554km<sup>2</sup>, including 29km of coastline and extends about 20km inland.

The Shire incorporates a mix of town sites, semi-rural settlements, beach side developments and rural properties. Totaling 7,823 properties.

The Shire's population was 18,175 as of 2022. It is one of the fastest growing regions in WA with a Gross Regional Product of \$691,900,000.

The Shire of Capel had 77 full time staff and 116 total staff in 2022.

The Climate Change Adaptation and Sustainability Committee (CCAS) was formed in 2009 to support the development of a Climate Change and Sustainability Framework that aligns with the Strategic Community Plan, Corporate Business Plan and Councils strategic direction.

The Committee will manage the delivery of the Framework and provide ongoing recommendations to Council to embed climate change adaptation and sustainability principles in Council decision making and operational activities.

Council endorsed a Climate Change Declaration in 2021 to formalise the Shire of Capel's commitment to the following:

- Develop and implement a Climate Change Action Framework of policies, projects and other initiatives.
- Assess the locally specific risks associated with climate change and implications for our services and identify areas where appropriate mitigation and/or adaptation strategies should be developed and implemented.
- Set an appropriate corporate emissions reduction target and work towards its achievement.
- Identify, secure and preserve strategic resources for future Climate Change mitigation.
- Encourage and empower the local community and local businesses to reduce their greenhouse gas emissions and to adapt to the impacts of climate change.
- Support WALGA to work with State and Federal Governments to ensure achievement of greenhouse gas emissions reduction targets as set out in key national and international agreements.
- Support WALGA to work with State and Federal Governments to implement key actions and activities for climate change management at a local level.
- Monitor the progress of our adaptation and mitigation actions and communicate our achievements to the neighbouring councils, state and federal governments and to the community.
- Ensure that, at appropriate review intervals, our climate change Action Plans/policies/strategies are reviewed and amended to incorporate the latest climate science and to reflect the climate change management priorities and progress achieved to date.





Australia signed the Paris Agreement in December 2015 – the first-ever universal, legally binding global climate deal was adopted by 195 countries, outlining nations’ climate change adaptation and mitigation responsibilities.

The Australian Government released its Long-Term Emissions Reduction Plan in October 2021 to achieve net zero emissions by 2050. The Plan aims at reaching a net zero economy through a technology-based approach, whilst protecting relevant industries, regions and jobs.

Following this, in June 2021 the WA State Government announced a commitment to reducing whole-of-government emissions by 80 per cent below 2020 levels by 2030 – a vital step towards achieving our existing whole-of-economy target of net zero by 2050.

Agencies are encouraged to develop their own net zero transition plans outlining how they will reduce or avoid emissions across their operations, consistent with Government’s focus on energy efficiency and renewable energy. The Sustainability Framework will set corporate emission reduction targets and work towards achieving these targets through adaptation actions, and ongoing monitoring of emissions.

## Local Government Sustainability Responsibilities

- Administer state and federal legislation to promote climate change adaptation.
- Manage risks impacts on public assets; and service delivery.
- Collaboration across LGAs and State government to manage risks of regional climate change.
- Ensure local government policies and regulations (including planning and development regs) incorporate climate change considerations and are consistent with state/federal climate policies.
- Build resilience and adaptive capacity in the local community – including providing information about climate change risks.
- Partnerships with community, relevant Non-government organisations (NGOs), businesses and others to manage climate change risks and impacts; and
- Prepare, prevent, respond and recover from detrimental climate impacts.





## Community Perceptions Survey

---

The Shire's most recent Community Perceptions Surveys, undertaken in 2020 and 2022, identified Climate Change as a key theme under the Natural Environment heading. The community was particularly concerned about the effects of climate change on the natural environment such as beach erosion or increased fire risk and also wanted the Shire to promote sustainable development initiatives such as urban forest and community battery/solar power schemes. The community's specific comments on Climate Change were:

*'Make climate change a key indicator of every decision.'*

*'Minimising climate change impacts, and lessen our footprint on the environment. More tree planting to absorb CO2 along roadsides.'*

*'Consider state and federal government climate change recommendations, don't waste money on duplicated effort.'*

*'Less focus on climate change and the environment. Australia has a very small population and globally our impact is minimal.'*

80 percent of respondents rated the Shire's waste collection services as either 'good' or 'very good.'

*'Environmental protection should be a much higher priority.'*

*'Prioritise the natural environment and protect all that remains.'* *'Natural environment needs sustainable development over time.'*

*'Need to better protect the natural environment. The local bushland and wildlife have been devastated by housing development.'*







## Summary of Sustainable Objectives

---

The Shire of Capel defines sustainability as: 'Governance excellence to meet the needs of current generations without compromising the needs of future generations, while ensuring a balance between economic growth, environmental care, and social well-being.'

For the purposes of this framework, we are referring to:

- actions that generate a decrease in the consumption of resources (water, energy, equipment, supplies etc.).
- actions that generate a decrease in waste production and/or improved waste management outcomes.
- actions that generate a reduction in adverse impacts on the natural environment (water quality improvements).
- climate change mitigation and adaptation actions.
- actions that generate an improvement in disaster recovery/resilience.
- actions that directly generate a substantial, tangible improvement in the local economy (job creation, decreased poverty, economic growth that is decoupled from environmental damage etc.).

Adaptation is a key component of the long-term response to climate change and critical to ensuring communities, livelihoods and ecosystems are protected. The United Nations Framework Convention on Climate Change recognises that adaptation is a global challenge faced by all, with widespread risks across industries, sectors and governments.

The Corporate Adaptation Action Plan will be developed to specifically focus on identifying actions that the Shire can take to manage the risks and adapt to the impacts of climate change on their operations. Annually, actions from the Plan will be incorporated into the Shire's Corporate Business Plan and where appropriate, into draft Annual Budgets.

The Sustainability Annual Progress Report will be released each year to track progress towards the agreed targets set out in the Framework and Action Plan. This annual reporting process allows the Shire to assess any gaps or resourcing issues in time for the following year's budget. A summary of performance is included in the Shire's Annual Report to provide transparency and accountability on the Shire's contributions towards the goal of best practice sustainable development. The Sustainability Annual Progress Report will be aligned with the actions and deliverables in the Shire's Corporate Business Plan.



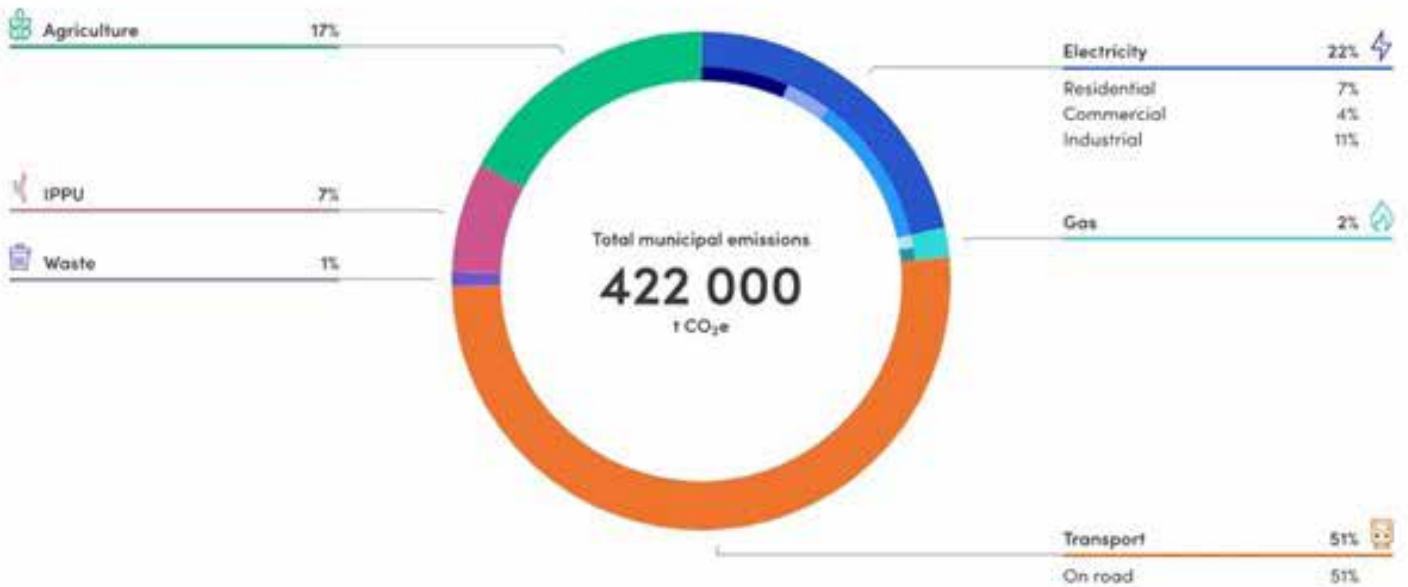
Dalyellup





# Summary of Sustainable Objectives

Capel's major emissions source is road transportation and the second largest source of emissions is electricity consumption:



Source	Sector	Emissions (t CO <sub>2</sub> e)
Electricity	Residential	28 000
	Commercial	15 000
	Industrial	48 000
Gas	Residential	3 000
	Commercial	1 000
	Industrial	4 000
Transport		216 000
Waste		4 000
IPPU		30 000
Agriculture		73 000
Land Use		16 000

Land Use data is not used in the chart nor the displayed total municipal emissions.



## Framework Action Areas to Achieve Aims and Targets

---

The following section describes a series of key priority areas that the Shire proposes to focus on to achieve its aims and targets in six different areas across general sustainability, energy, transport, water, waste and carbon.

The Framework includes activities such as data collection and reporting that are ongoing over the 2023 – 2027 period. The Framework also includes some more general activities such as assessments of facilities, investigations of opportunities for climate adaptation actions and conducting trial projects which could lead to the development of new actions.

Many of the proposed priority areas will lead to direct reductions in energy or water consumption, waste production or greenhouse gas emissions. These savings are identified where they can be estimated with reasonable accuracy. Some actions such as community awareness and education programs will provide broader benefits but these are usually difficult to quantify.

Implementation of the proposed actions will be subject to budget availability, including grants that may be obtained through State or Federal Government programs. Changes in Council priorities, technologies and State or Federal Government policies may also affect the viability of proposed actions.

Further investigation is required for each of the proposed action areas to estimate the timeframe for delivery, estimated cost, potential funding sources and baselines for measuring and monitoring progress





# Council's Key Priorities and Targets

Priority area	Aims	Targets
<b>Sustainability</b>	<p>Reduce the Shire's environmental impact and environmental impacts of the broader community.</p> <p>Report and promote sustainability achievements and provide leadership through progressive actions.</p>	<p>Publish Annual Sustainability Report on sustainability outcomes and achievements.</p>
<b>Energy</b>	<p>Reduce fossil fuel based energy use by Shire facilities through energy efficiency measures, renewable energy systems and green energy supplies.</p> <p>Implement programs to help the community reduce their energy use.</p>	<p>Reduce or offset CO<sub>2</sub> emissions from energy use in Council facilities per capita by 15% by 2027 compared to 2023 levels.</p>
<b>Transport</b>	<p>Reduce petrol and diesel use in Shire vehicles by using vehicles wisely, buying more efficient vehicles, using green fuels or offsetting transport greenhouse emissions.</p> <p>Promote sustainable transport options to the local community and improve infrastructure for walking and cycling.</p>	<p>Reduce or offset CO<sub>2</sub> emissions from fuel use in Council vehicles per FTE by 10% by 2025.</p>
<b>Water</b>	<p>Reduce scheme and ground water use in Shire buildings and parks through water efficiency measures and using alternative sources such as rainwater or recycled water.</p> <p>Implement or participate in programs to help the community reduce their water use.</p>	<p>Reduce scheme water use in Council facilities per capita by 5% by 2025 and 10% by 2030. Reduce ground water use by 2.5% per Ha of main Public Open Space (POS) by 2025 and 10% by 2030 compared to 2023 levels.</p> <p>Maintain Waterwise Council endorsement.</p>
<b>Waste</b>	<p>Reduce waste generated and sent to landfill from Shire operations by using less materials and improve recycling.</p> <p>Help the community to reduce their waste and improve recycling rates.</p>	<p>20% of Shire's municipal waste to be recovered, recycled and/or diverted from landfill by 2025 and 30% by 2027/28.</p>
<b>Carbon</b>	<p>Reduce or offset greenhouse gas emissions other than through energy, transport, water and waste actions.</p>	<p>Plant 5,000 trees (additional to business as usual) by 2025.</p>



## Sustainability

Action	Target Group, Site or Service	Notes, Examples
<b>Sustainability</b>		
<b>Infrastructure, Built Form and Natural Area</b>	<p>New Council buildings and facilities.</p> <p>Future developments and new buildings.</p>	<p>Examples: Design new buildings and facilities to incorporate energy and water efficiency features and use materials with lower environmental impacts.</p> <p>Encourage, assist or require developers and builders to address energy, water, transport, waste, greenhouse and other environmental impacts of their developments or buildings. Develop "liveable neighbourhoods" actions.</p> <p>Sustainably manage our environment by protecting, managing and enhancing our unique natural resources and minimising risks to human health.</p>
<b>Education and Advocacy</b>	Community and Shire staff.	<p>Distributing information on saving energy and water and reducing waste in the home through website, social media, public events like Captivate Capel and in Shire buildings.</p> <p>Use existing Council brochures and publications from other government agencies that provide good information on sustainable practices.</p>
<b>Planning</b>	Council, other government agencies and other organisations.	<p>Develop and implement a Corporate Adaptation Action Plan specifically focusing on identifying actions that the Local Government can take to manage the risks and adapt to the impacts of climate change on their operations.</p> <p>Work with other organisations to develop and implement new sustainability policies and initiatives in the Shire, in the South West and across WA.</p>
<b>Monitoring and Reporting</b>	Council, Shire residents, general public, other government agencies and other organisations	<p>Complete and publish an annual Sustainability Report on: energy, water, waste and CO2 emission reductions against targets and objectives.</p> <p>Strategic Alignment to the Shire's Strategic Community Plan 2021 to 2031; linking all actions to the outcomes in the Plan.</p>

## Energy

The Shire of Capel contracts Western Power to provide street lighting services. There are currently 1647 streetlights in the Shire. There are limited opportunities for reducing energy use for street lighting. Hours of operation could be reduced, although this could create safety issues. There is also an option to install more efficient streetlights but the cost is currently quite high compared to the savings that would be achieved.

There are opportunities to reduce energy consumption / costs across shire facilities by conducting an energy audit investigating current energy use efficiencies and installing energy efficient technology (e.g. solar hot water systems) where practicable.

Action	Target group, site or service	Notes
<b>Energy</b>		
<b>Infrastructure, Built Form and Natural Area</b>	Council facilities, streetlighting, other - St Johns Centre, HACC office, Boyanup Aged Care, toilet blocks, waste transfer station, etc.	<p>Replace existing hot water systems (HWS) with solar HWS.</p> <p>Investigate time-based controls for ducted air-conditioners and implement if not in place.</p> <p>Investigate potential for replacing Western Power and Council managed streetlights with more efficient ones or reducing operating times but only where peoples' safety is not affected.</p> <p>Assess energy consumption and electrical equipment used in other buildings, including those operated by other organisations where Council pays the electricity bills and identify opportunities for reducing energy use.</p> <p>Install solar power systems on each building.</p>
<b>Education and Advocacy</b>	Council, residents, and staff.	Awareness campaign about switching off and controlling equipment to reduce energy use, <u>costs</u> and environmental impact.
<b>Planning</b>	Council facilities, industry and community.	<p>EV charging station site investigation – including location, physical visibility, online visibility (potentially in Boyanup, Dalyellup and Capel)</p> <p>Investigate value of Synergy's Green Energy compared to other green power or CO2 offset products.</p>
<b>Monitoring and Reporting</b>	Council facilities.  Street lighting (Western Power and Shire owned).	<p>Collect and analyse data on energy use in Council facilities during each financial year: Utilise Energy Management Software to create a comprehensive data management plan, collecting grid electricity, renewables, gas, water, fleet, <u>emissions</u> and asset data to monitor and report on.</p> <p>Analyse electricity costs for sites under different tariffs and change tariffs where savings can be made (target sites with higher bills or significant off-peak usage).</p> <p>Report in annual Sustainability Report.</p>

# Transport

During 2021/22 Greenhouse gases emitted through the combustion of fuel in Shire vehicles, passenger cars, utilities, trucks and machinery comprise the largest portion of the Shire's CO2 emissions. This action area will review modes of transport used by the Shire and our community to facilitate sustainable transport within the Shire's municipal boundaries.

Action	Target group, site or service	Notes
<b>Transport</b>		
<b>Infrastructure, Built Form and Natural Area</b>	Electric vehicle users.	<p>Update Shire fleet vehicles to electric where practicable and within our fleet management budget.</p> <p>Investigate opportunity for building electric vehicle recharging stations across the Shire.</p> <p>Construct footpaths and other infrastructure to encourage walking and cycling as an alternative to driving, where of greatest benefit to the community and subject to annual budget.</p>
<b>Education and Advocacy</b>	Shire staff and community.	Facilitate sustainable transport through awareness campaigns about reducing environmental impacts, and public health benefits of alternative transport.
<b>Planning</b>	Shire vehicles.	<p>Investigate opportunities for reducing or offsetting transport CO2 emissions e.g. through buying more efficient vehicles, planting trees as carbon offsets or buying carbon offsets and develop an action plan accordingly.</p> <p>Implement action plan for reducing fuel use and CO2 emissions in Shire vehicles.</p>
<b>Monitoring and Reporting</b>	Council, residents and staff.	<p>Collect and analyse data on fuel use in Shire vehicles during each financial year.</p> <p>Report in annual Sustainability Report.</p>





# Water

This action area will focus on sustainable improvements in the Shire and community's use of scheme water, groundwater and environmental water (lakes and wetlands) plus any associated contamination or pollution.

The most likely scenario for the longer term is that there will be less rainfall in the Southwest region, so we need to be prepared and waterwise. We are also expecting hotter weather and more droughts. Limited water resources will be exacerbated by growing demand from industry, agriculture and the community.

The Shire will lead by example in its water efficiency efforts. The community will also play an important role in climate resilience, particularly with improving efforts to reduce water use and adopting a new mindset for waterwise behaviours.

Action	Target group, site or service	Notes
<b>Water</b>		
<b>Infrastructure, Built Form and Natural Area</b>	POS and Shire reserves and facilities.	<p>Investigate options for water recycling and reduction across the Shire.</p> <p>Investigate and progress opportunities to improve irrigation of POS in Dalyellup and ovals. Including irrigation controllers and sensors so that all controllers have waterwise and centralised control capabilities; reprogramming controllers to reduce irrigation of native garden areas and cap unnecessary sprinklers for mature trees.</p> <p>Water saving fixtures have already been installed in many Council buildings. Identify any additional opportunities to reduce water use including installing rainwater tanks to supply water to toilets.</p> <p>Implement any low-cost options identified in assessments that provide reasonable savings e.g. tap aerators, low flow shower heads etc.</p> <p>Improve water quality in natural waterways, including possible waterway riparian vegetation, fencing of waterways and nutrient stripping.</p>
<b>Education and Advocacy</b>	Shire staff and community.	<p>One or more staff attend training in water-wise irrigation.</p> <p>Participate in the South-West Drainage Partnership Group.</p> <p>Work with Water Corporation and developers to run water wise programs for residents e.g. like the 'reset your retic' program.</p> <p>Run a "Fantastic Front Yards" project to get rid of all the lawns and replace them with native shrubs. We could have a competition for whole street makeovers. 10% of Dalyellup is State Housing so possible partnership/community-building opportunities.</p> <p>Partner with Geocatch's Bay Ok sustainable garden program; and the Bay Ok Day education programs for students.</p>

## Water (cont.)

Action	Target group, site or service	Notes
<b>Planning</b>	Council POS & Parks staff.	<p>Review and further develop guidelines and processes for staff to use to manage water use for irrigating POS including seasonal water budgets, monitoring, maintenance, etc</p> <p>Review progress to date and additional opportunities for saving water and develop an action plan for new projects going forward.</p>
<b>Monitoring and Reporting</b>	Shire facilities; Council, residents and staff.	<p>Collect and analyse data on scheme and ground water use during each financial year.</p> <p>Report in annual Sustainability Report.</p> <p>Report on water consumption and water initiatives to Water Corporation to maintain Waterwise Council status.</p>

## Waste

Council provides a weekly kerbside organics collection with general waste and recycling collections on alternate fortnights for most households in the Shire. It also provides six monthly verge collections of green waste and annual verge collections of hard waste. Council operates a waste transfer station where Shire residents can drop off general, recycling and green wastes. At times Council runs waste reduction programs for plastic drums, waste oil, electronic waste and hazardous household chemicals.

This action area will focus on Waste reduction programs, waste education, forming regional waste alliances and implementation of new waste technologies particularly in the Circular economy model - which involves sharing, leasing, reusing, repairing, refurbishing and recycling existing materials and products as long as possible.

Action	Target group, site, or service	Notes
<b>Waste</b>		
<b>Infrastructure, Built Form and Natural Area</b>		Waste transfer station efficiency improvements, and new sustainable technology practices.
<b>Education and Advocacy</b>	Residents.	<p>Inform residents about recycling opportunities through social media, distributed annually for kerbside organics and hard waste collections.</p> <p>Distributing information on sustainability practices in the home and community through public advertising such as website, social media, public events e.g. Captivate Capel.</p>
<b>Planning</b>	Shire staff and new products and services.	<p>Investigate opportunities for regional waste alliances and combined funding submissions – particularly for new waste technologies, and circular economy opportunities.</p> <p>Strengthen adoption of the Shire’s sustainable purchasing policy to ensure greater use of products made from recycled materials and products and services with lower environmental impacts. Shire Policy 2.8.</p> <p>Review consumption and waste practices and raise awareness to reduce consumption and waste and improve recycling in the office. Including PPE recycling and disposal, plastic bans.</p>
<b>Monitoring and Reporting</b>	Shire buildings and staff.	<p>Collect and collate data on waste quantities generated by Shire residents each financial year for Annual Waste Census.</p> <p>Report in annual Sustainability Report.</p>

# Carbon

Activities in energy, transport, water and waste can all impact on greenhouse gas emissions. However, in this Framework activities are grouped within these areas to make it easier to set targets and develop specific actions. There are activities outside these areas that can also reduce greenhouse gas emissions such as carbon farming and offsets.

Action	Target group, site, or service	Notes
<b>Carbon</b>		
<b>Infrastructure, Built Form and Natural Area</b>	Shire buildings and facilities and land managed by Council.	<p>Create sustainable design principles for new developments that includes tree canopy cover and shading.</p> <p>Incorporate opportunities for biodiversity, vegetation, and green spaces into the Shire's planning and development processes.</p> <p>Plant 5,000 trees and shrubs using local species to offset CO<sub>2</sub>, enhance biodiversity, protect waterways and enhance aesthetics of some areas.</p>
<b>Education and Advocacy</b>		Provide data online on carbon emissions for the Shire.
<b>Planning</b>	Local farmers and large land holders.	<p>Investigate and promote local carbon farming opportunities e.g. through revegetation of marginal land or manure management for dairy cattle, including investigating options for Council to fund local revegetation projects in return for carbon credits.</p> <p>Investigate options for a Shire Offset Plan.</p>
<b>Monitoring and Reporting</b>	State Government, Council, residents.	Collect carbon emissions data and report in annual Sustainability Report.

# Current Funding Opportunities for Sustainable Local Government Projects

## State Government Funding

**Lotterywest Grants** for Conservation of Natural Heritage help organisations conserve, protect, explain and share various aspects of our heritage. These grants fall into four areas: conservation of natural heritage, conservation of cultural heritage, interpretation of cultural heritage and community histories.

**Riverbank Funding** is available for projects for protection, enhancement and management of fringing indigenous vegetation and habitat to enhance the ecosystem structure and function of the foreshore.

**Coastal Adaptation and Protection (CAP)** grants provide financial assistance for Local Government projects that identify and manage coastal hazards. CAP Grants are funded by the Department of Transport.

**CoastWest** is a State Government initiative aimed at providing opportunities for Western Australians to learn about, conserve and protect our coast. The Department of Planning administers the CoastWest program on behalf of the West Australian Planning Commission.

**Coastal Management Plan Assistance Program (CMPAP)** grants support coastal land managers to develop strategies and management plans for coastal areas that are, or are predicted to become, under pressure from a range of challenges.

The **Community Stewardship Natural Resource Management Grants** are designed to facilitate the conservation and sustainable management of WA's natural resources by supporting local community groups and local governments to undertake stewardship of natural resources in their local area.

**Charge Up Workplace Grant Program** \$15 million grant funding as part of state government strategy to expand electric vehicle (EV) charging infrastructure throughout the State available to expand electric vehicle charging infrastructure. The grants will meet about half the costs of buying and installing charging stations and associated software. A maximum value of \$75,000 in regional and remote areas in recognition of the higher installation costs.

## Federal Government Funding

**ARENA Future Fuels Program**, coordinated by WALGA in WA, has funds available to Local Government to purchase and install charging infrastructure for corporate fleet electric vehicles.

The **CEFC Clean Energy Finance Corporation** are funding the Local Government Finance Program, which can help councils invest in projects such as LED street lighting upgrades to reduce energy costs and lower carbon emissions.

Emissions Reduction Fund aims to provide incentives for a range of organisations and individuals to adopt new practices and technologies to reduce their emissions.

**National Disaster Resilience Program** supported by the Commonwealth and State Government, aims to develop safer, sustainable and more resilient communities, better able to withstand the effects of natural disasters.

**Smart Cities and Suburbs Program** supports Local governments to work collaboratively with stakeholders to deliver smart cities and suburbs.



Shire of Capel  
31 Forrest Road, CAPEL, WA, 6271  
T: (08) 9727 0222 F: (08) 9727 0223  
E: [info@capel.wa.gov.au](mailto:info@capel.wa.gov.au)

PO Box 369, Capel WA 6271  
[www.capel.wa.gov.au](http://www.capel.wa.gov.au)



SHIRE of  
**CAPEL**