

Capel Regional Equestrian Centre (CREP)

Department:
Community and Corporate Services

Grant Funded: Yes

Funding Agent: LRCI



Project Brief:

Construction of a new Sports Pavilion – Capel Regional Equestrian Park.

The Capel Regional Equestrian Park (CREP) is a 100 acre Multi Use Equestrian facility boasting local, state, and regional level facilities for:

- Pony Club.
- Adult Riders.
- Polocrosse.
- Camp draft.
- Horse Power (formerly riding for the disabled), and;
- International level competition and facilities for events hosting.

The land on which this internationally recognized facility is sited is owned by the Crown and vested in the Shire of Capel (Reserve R5036).

The grounds are used by 5 clubs of different disciplines and boasts 6 major regional, state, and international events per year.

Membership make provision for both men and women with the ages ranging from 4 – 84 years.

The grounds and buildings are occasionally used for local music events accessible by both public and community members.

The existing buildings were constructed in the 1970's by Volunteers for the National Polocrosse Championships.

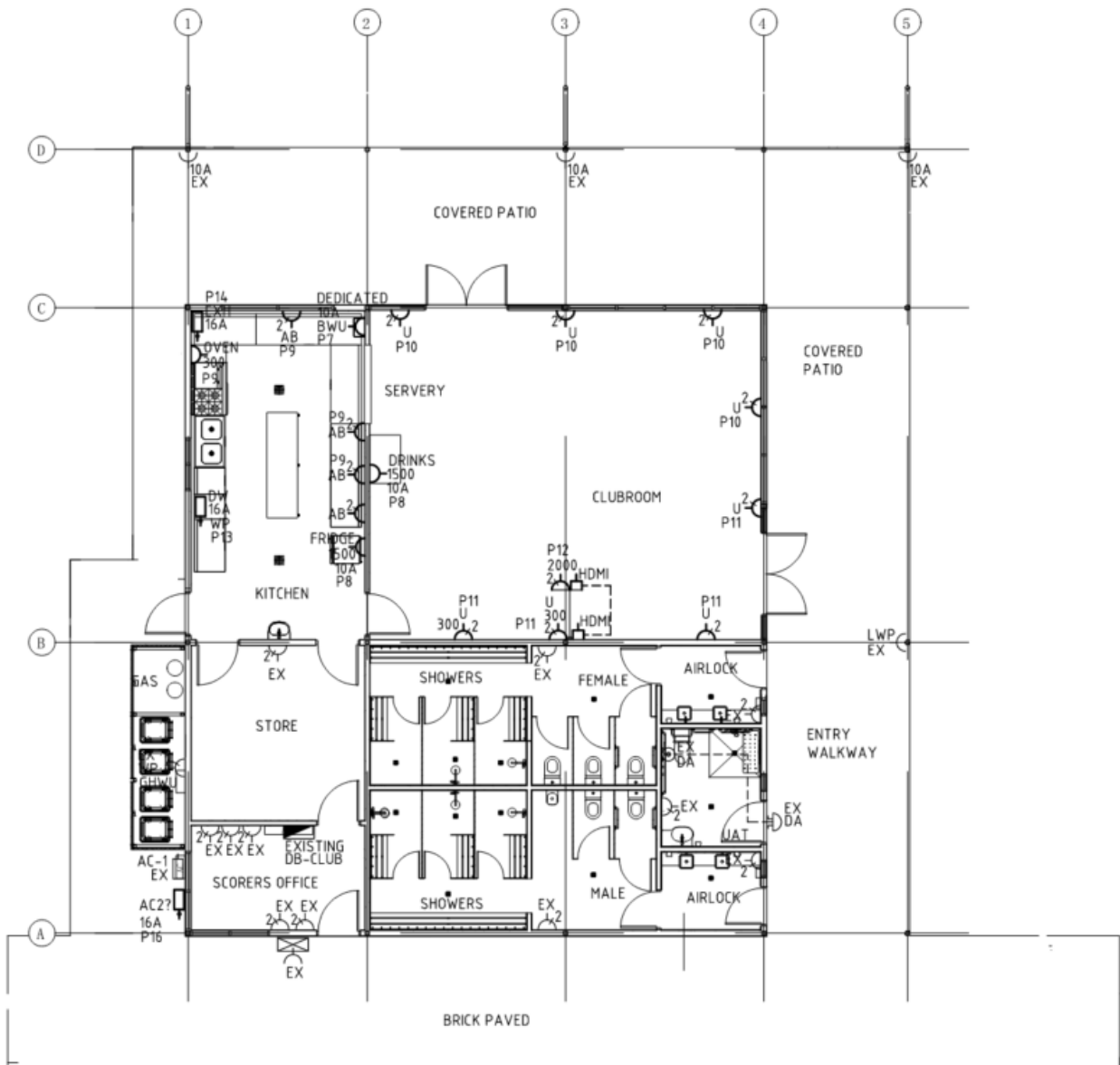
They have served the equestrian center well, but do not meet current building codes and were built for a lifespan of around 30 years.

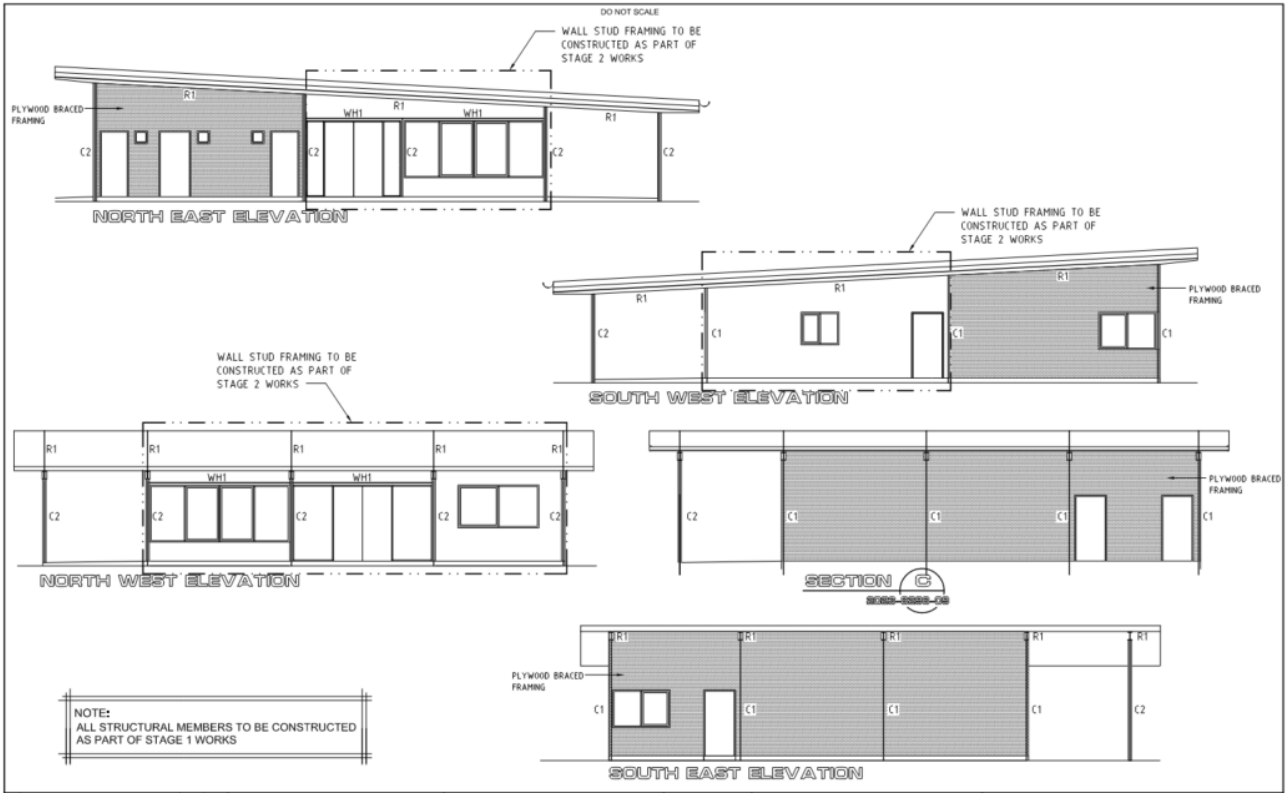
Although they have been well maintained they are no longer structurally sound or providing safe and accessible ablutions and other amenities.

The project scope will see the following but not be limited to, the following key tasks:

- Demolition of the existing building structures.
 - Construction of a new pavilion including ablutions/kitchen/scoring office/meeting space.

General Design overview diagram (Not so scale and not IFC)





For any queries regarding this listing please contact the Community Commercial Services Department on:

9727 0222