



DONNYBROOK FOOTBALL CLUB

SWFL PREMIERS 1977, 1998, 1999, 2000 & 2018

SWFL Fixtures being played at Boyanup in Round 14

This summary sets out activities the DFC committee and volunteers will coordinate and manage on game day when Boyanup Markets are happening during round 14 on 28th July 2024.

Aim

The aim of this plan is to ensure access and egress from Boyanup Oval facility, while SWFL games and Boyanup Markets are co-occupants, is done in a safe and courteous manner and that customer satisfaction/experience is kept at a high standard.

a. Football Patron Parking

- i. Use of designated parking lot near Public Toilets and Sporting Complex building for SWFL, Team Coaches and Umpiring officials, noted in attached drawing as **Parking Lot 4**
- ii. Use of designated oval boundary parking, noted in attached drawing as **Parking Lot 5**
- iii. Use of designated vacant area next to Skate Park, noted in attached drawing as **Parking Lot 6**
- iv. Use of designated vacant area east of the library, if needed for overflow parking, noted in attached drawing as **Parking Lot 7**, this parking lot will now only be accessible via a gate/opening located next to the Skate Park and Lot 6

b. Other Parking Arrangements

- i. Allowance has been made to make easy passage and onsite parking for ambulance services.

c. Southwest Football League Ticket Booth

- i. Ticket Booth gazebo will be located south of the current gate entrance,

d. Signage, Direction and Volunteers

- i. During mornings events DFC volunteers assist both Market and Football patrons gain easy and safe access via car and foot traffic to both events
- ii. Directional signs and verbal instructions will be relayed to various patrons as to where respective event parking allocations have been set aside for them.
- iii. DFC volunteers will maintain this support up until Markets have closed around midday.
- iv. 5kph signs will be located on entry and throughout the grounds parking areas.

v. Sign advising Market Patrons that Entry is Free to the Boyanup Markets is to be set out at the main gate.

e. Market Patron Parking

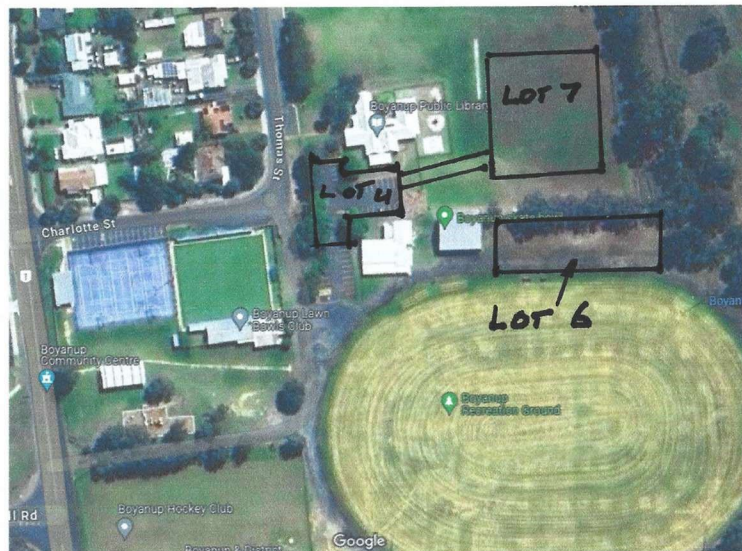
i. Parking on **Thomas Street and Charlotte Street** plus Lots 1, 2 & 3 are reserved for Market patrons.

Drawings have been set out below to provide more detail of allocated parking bays plus Ticket Booth location.

Drawing Layout No. 1



Drawing Layout No. 2



Drawing Layout No. 3



Ticket Booth, Boyanup Oval

