



SHIRE OF

# Capel Snippets

April 09 Issue 3

Ph: 9727 0222

Fax: 9727 0223

[www.capel.wa.gov.au](http://www.capel.wa.gov.au)

[info@capel.wa.gov.au](mailto:info@capel.wa.gov.au)

Congratulations to our Capel and Dalyellup library staff on their hosting of very successful Harmony Day events. Our Shire is diverse in culture and harmony day recognises the differences and promotes acceptance of these differences. Libraries are an integral part of the community and I know our staff strive to provide excellent service and a variety of events to suit all needs. By the way don't forget to diarise the Kokoda Track presentation that will be taking place at Boyanup Library on April 16th featuring our Young Citizen of the Year Phoebe Tucker and special guest Don Robertson "My experience of the Kokoda"!

Other news to share with you is that the Shire is currently conducting a review into the ward system and Council representation and calling for comment by 24<sup>th</sup> April 2009. Further details can be found in this document. By now you would have also received a copy of the Community Survey and hopefully have completed it and returned it to the Shire office. If for some reason you did not receive a copy, then please contact the main office to have one sent out to you. The survey will allow us to identify gaps in service provision and assess what progress has been made. Your participation and feedback is greatly appreciated.

**Paul Sheedy – Chief Executive Officer**

## Draft Trails Master Plan Open for Public Comments

A draft copy of the proposed Trails Master Plan will be available for public comment during the month of April. A copy will be available to be downloaded from the Shire's website, or picked up from the Libraries.

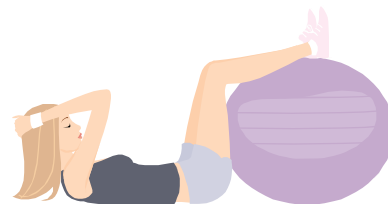
Please provide comments in writing to Michelle at the Shire Office before 15<sup>th</sup> May 2009



## 50s and Not Forgotten Program

Pilates starting in May - various venues throughout the Shire.

Register your interest – Ring Sue on 9727 0222



## Library News

**Don't Forget**

**Boyanup Library**

April 16<sup>th</sup> at 6.30pm

The Kokoda Track

**Ring Terry – 9731 5639**

**Do you have a question about shire processes and activities? We would be pleased to answer your questions so why not call us on 9727 0222 Mon – Fri 8.00am – 4.00pm**

## WHAT DO YOU THINK OF WARDS & REPRESENTATION?

The Shire of Capel is conducting a review into its ward system and representation and invites public participation in the review.

A discussion paper is available outlining the current situation and several options including alternative ward models. Members of the community are invited to make a written submission about any aspect of ward boundaries and representation and a 'Feedback Sheet' has been prepared to simplify the submission process. Both the Discussion Paper and the Feedback Sheet are available from the Shire Office or libraries.

A period of 6 weeks has been allowed for public submissions. These are now invited and must be submitted in writing to the Shire of Capel by 4.30pm on Friday 24 April 2009 and can be either handed into the Shire Office or posted, or emailed to us.

Questions on the Review can be directed to the Chief Executive Officer by telephoning the Shire office during normal office hours.

### FAVOURITE WEBSITES

Radio.Com – [www.radio.com.au](http://www.radio.com.au)

Healthway – [www.healthway.wa.gov.au](http://www.healthway.wa.gov.au)

Hotel Club Sponsorship program – [www.hotelclub.com/sponsorship](http://www.hotelclub.com/sponsorship)

## Shire of Capel Town Planning Scheme No. 7

### NOTICE OF PUBLIC ADVERTISEMENT OF DEVELOPMENT PROPOSAL

It is HEREBY NOTIFIED for public information and comment that the Council has received an application to develop land for the purpose described hereunder:

Land Description

**Lot No. 1 Street** – Maidment Parade, Dalyellup

**Proposal** To extend the period of approval to dispose of residue from Millennium Inorganic Chemicals Titanium dioxide pigment plant by 3 years from March 2010 to March 2013.

The area and volume used in the disposal will remain the same as for the current approval.

Details of the proposal are available for inspection at the Council Office and on the Shire's website. Comments on the proposal may be submitted to the Council in writing on or before the 7<sup>th</sup> day of May 2009.

## VERGE DRAINAGE

Given the low lying nature of land in the Capel and Boyanup townsites and the relatively high water tables in winter, the Shire many years ago created swale drains along the road verges of many streets to assist in removing water during storm events.

In recent times Shire staff have noticed an increase in the number of residents who are modifying the verges adjacent to their property, which may impact on the flow of water. When these situations are found the Shire may require the land owners who have undertaken the works to restore the verge to its original form at their own cost. So please don't fill in the swales to create gardens or hard stand areas etc.

To ensure this does not happen and the integrity of the drainage system remains, please ensure any works on the road verge are approved in writing by the Shire prior to commencement.

In the near future Shire staff will be conducting inspections of swales and drainage in preparation for winter and future drainage works. If you have noticed any blocked drains please report them to staff on 97270222 for action.

**Do you have a question about shire processes and activities? We would be pleased to answer your questions so why not call us now on 9727 0222 Mon – Fri 8.00am – 4.00pm**

## Boyanup Townsite Draft Strategy

The **Draft** Boyanup Townsite Strategy will soon be advertised for public comment.

The advertising process will commence later in April and carry through May. Households in Boyanup will be advised of the commencement of the advertising process and a public meeting will be held to present the **draft** proposal.

Please note that copies of the **draft** strategy will not be available until the formal commencement of the advertising process.

## DEVELOPMENTS IN SHIRE

For those of you who are interested in knowing what developments are happening in the Shire here are a few that have recently been processed.

### Development Approvals

- Ancillary Accommodation – Gelorup
- Op-Shop – Boyanup
- Additions to Bunbury Cathedral Grammar School – Year 7 Facilities
- Telecommunications Mast - Boyanup

## TOWN PLANNING SCHEME AMENDMENTS UPDATE

### Amendment No 36

The Minister for Planning has advised that final approval will be given to the Maitland Road, Capel Scheme Amendment subject to modifications to the rezoning documents being undertaken.

### Amendment No 38

The Western Australian Planning Commission had advised that it is prepared to agree to advertising of the East Road Capel Scheme Amendment subject to modifications to rezoning documents being undertaken. The proposal will now be sent to the Environmental Protection Authority for assessment prior to advertising for public comment.

### Amendment No 46

Council has agreed to commence a rezoning of Meadowbrook Estate to permit the development of an Aged Persons Village. The proposal will now be sent to the Environmental Protection Authority for assessment prior to advertising for public comment.

## SIGNAGE ON HIGHWAYS

Main Roads WA recently confiscated illegal business signs on Bussell Highway and South Western Highway.

It is to be noted that business related signs are not permitted on highways or on land adjacent to a highway when the land does not contain an approved business.

Community groups that wish to have temporary signage on highways giving notice of upcoming events are advised that approval is required from both Main Roads WA and the Shire of Capel.

Please contact the Main Roads WA Customer Service Officer and the Shire’s Building Services Section for information regarding signage applications.

## FAVOURITE WEBSITES

Check out the following websites for information on available funding, promotion and to find out whats happening in the South West.

- Environmental Grants [www.dec.wa.gov.au](http://www.dec.wa.gov.au)
- National Naidoc Awards [www.naidoc.org.au](http://www.naidoc.org.au)
- Citizenship Support Grants [www.immi.gov.au](http://www.immi.gov.au)
- Regional Arts Fund [www.countryartswa.asn.au](http://www.countryartswa.asn.au)
- Country Sport Enrichment Scheme [www.dsr.wa.gov.au](http://www.dsr.wa.gov.au)

**Do you have a question about shire processes and activities? We would be pleased to answer your questions so why not call us now on 9727 0222 Mon – Fri 8.00am – 4.00pm**

## **Saving money and water with Waterwise Rebates**

### Flow regulators

These take the place of regular tap washers. They save you money by allowing water to flow at predetermined rates ie allows a flow of 9 litres a minute or less. Regulators rated at '3 Stars' or better are eligible for a Waterwise Rebate of \$2 per authorised flow regulator. The rebate is available to a maximum value of \$20 per household.

### Washing machines

A water-efficient washing machine can reduce water use in the laundry by up to 40 per cent. Look for the 'Star' rating to check the water efficiency before you buy. Washing machines must display a Water Efficiency Labelling Scheme (WELS) sticker and have a rating of '4.5 stars' or better to qualify for a rebate. The \$150 Waterwise Rebate is only available where the machine has been paid in full and is operational at a residential property.

### Domestic rainwater tanks

Around 55,000 litres of water could be collected from a 100m roof area and used to supply part of your household's water needs. A Waterwise Rebate of up to \$600 is available for the purchase and installation of new tanks for domestic use.

### **More information**

Rebate forms are available from most retail outlets where Waterwise products are sold. Alternatively, you can download a form at [www.water.wa.gov.au](http://www.water.wa.gov.au)

## **Murray Valley Encephalitis (MVE) virus**

Health update for those who are fly in/ fly out workers or those who are holidaying in the Pilbra and Kimberly region. The Department of Health have put out a warning for Murray Valley Encephalitis virus and Kunjin virus.

"MVE is a rare disease but can be very severe or fatal, so it is important that people take particular care to avoid mosquito bites for the next few weeks," Dr Lindsay said.

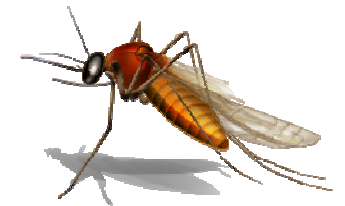
Initial symptoms of MVE include

- fever
- drowsiness
- headache
- stiff neck
- nausea
- dizziness
- In young children, fever might be the only early sign, so parents should see their doctor if concerned, and particularly if their child is drowsy, floppy, irritable, feeding poorly or is generally distressed
- In severe cases, people may experience fits, lapse into a coma, may be left with permanent brain damage or die.
- People experiencing these symptoms should seek medical advice quickly. Dr Lindsay said people most likely to be affected by the MVE virus were newcomers to affected regions, such as babies, young children, tourists or new employees, but anyone experiencing these symptoms should seek medical advice quickly.

People do not need to alter their plans to visit the Kimberley or Pilbara but it is important to avoid mosquito bites by taking a few simple steps, such as:

- avoiding outdoor exposure from dusk and at night
- wearing protective (long, loose-fitting) clothing when outdoors
- using a personal repellent containing diethyl toluamide (DEET) or picaridin. The most effective and long-lasting forms are lotions or gels. Most natural or organic repellents are not as effective as DEET or picaridin
- ensuring insect screens are installed and completely mosquito proof: use mosquito nets and mosquito-proof tents ensuring infants and children are adequately protected against mosquito bites, preferably with suitable clothing, bed nets or other forms of insect screening.

If you have any queries regarding this please feel free to contact Carla Webster or Colin Dent on 9727 0222.



**Do you have a question about shire processes and activities? We would be pleased to answer your questions so why not call us now on 9727 0222 Mon – Fri 8.00am – 4.00pm**